

Symphonic Band Scales

Pass-Offs

♩ = 92

Concert G

Musical staff for Concert G scale in G major, 4/4 time. The scale consists of 12 notes: G4, A4, B4, C5, B4, A4, G4, F4, E4, D4, C4, B3. The notes are grouped into three phrases of four notes each, with slurs over each phrase. The first phrase is an ascending scale, the second is a descending scale, and the third is an ascending scale. The piece ends with a whole note G4.

2 Concert C

Musical staff for Concert C scale in C major, 4/4 time. The scale consists of 12 notes: C4, D4, E4, F4, G4, A4, B4, A4, G4, F4, E4, D4. The notes are grouped into three phrases of four notes each, with slurs over each phrase. The first phrase is an ascending scale, the second is a descending scale, and the third is an ascending scale. The piece ends with a whole note C4.

3 Concert F

Musical staff for Concert F scale in F major, 4/4 time. The scale consists of 12 notes: F4, G4, A4, Bb4, A4, G4, F4, E4, D4, C4, Bb3, A3. The notes are grouped into three phrases of four notes each, with slurs over each phrase. The first phrase is an ascending scale, the second is a descending scale, and the third is an ascending scale. The piece ends with a whole note F4.

4 Concert Bb

Musical staff for Concert Bb scale in Bb major, 4/4 time. The scale consists of 12 notes: Bb4, C5, D5, Eb5, D5, C5, Bb4, Ab4, G4, F4, Eb4, D4. The notes are grouped into three phrases of four notes each, with slurs over each phrase. The first phrase is an ascending scale, the second is a descending scale, and the third is an ascending scale. The piece ends with a whole note Bb4.

5 Concert Eb

Musical staff for Concert Eb scale in Eb major, 4/4 time. The scale consists of 12 notes: Eb4, F4, G4, Ab4, G4, F4, Eb4, D4, C4, Bb3, Ab3, G3. The notes are grouped into three phrases of four notes each, with slurs over each phrase. The first phrase is an ascending scale, the second is a descending scale, and the third is an ascending scale. The piece ends with a whole note Eb4.

6 Concert Ab

Musical staff for Concert Ab scale in Ab major, 4/4 time. The scale consists of 12 notes: Ab4, Bb4, C5, Db5, C5, Bb4, Ab4, G4, F4, Eb4, D4, C4. The notes are grouped into three phrases of four notes each, with slurs over each phrase. The first phrase is an ascending scale, the second is a descending scale, and the third is an ascending scale. The piece ends with a whole note Ab4.

7 Concert Db

Musical staff for Concert Db scale in Db major, 4/4 time. The scale consists of 12 notes: Db4, Eb4, F4, Gb4, F4, Eb4, Db4, C4, Bb3, Ab3, G3, F3. The notes are grouped into three phrases of four notes each, with slurs over each phrase. The first phrase is an ascending scale, the second is a descending scale, and the third is an ascending scale. The piece ends with a whole note Db4.

8 Concert Gb

Musical staff for Concert Gb scale in Gb major, 4/4 time. The scale consists of 12 notes: Gb4, Ab4, Bb4, C5, Bb4, Ab4, Gb4, F4, Eb4, D4, C4, Bb3. The notes are grouped into three phrases of four notes each, with slurs over each phrase. The first phrase is an ascending scale, the second is a descending scale, and the third is an ascending scale. The piece ends with a whole note Gb4.

9

Concert B

Musical notation for Concert B scale. The scale is written on a single treble clef staff in the key of D major (two sharps). It consists of a sequence of eighth notes: D4, E4, F#4, G4, A4, B4, C5, D5, E5, F#5, G5, A5, B5, C6, D6, E6, F#6, G6, A6, B6, C7, D7, E7, F#7, G7, A7, B7, C8, D8. The scale is divided into two measures by a bar line. The first measure contains the first 14 notes, and the second measure contains the last 14 notes. A slur covers the entire scale. The key signature is indicated by two sharps (F# and C#) at the beginning of the staff.

10

Concert E

Musical notation for Concert E scale. The scale is written on a single treble clef staff in the key of E major (three sharps). It consists of a sequence of eighth notes: E4, F#4, G#4, A4, B4, C#5, D5, E5, F#5, G#5, A5, B5, C#6, D6, E6, F#6, G#6, A6, B6, C#7, D7, E7, F#7, G#7, A7, B7, C#8, D8. The scale is divided into two measures by a bar line. The first measure contains the first 14 notes, and the second measure contains the last 14 notes. A slur covers the entire scale. The key signature is indicated by three sharps (F#, C#, and G#) at the beginning of the staff.

11

Concert A

Musical notation for Concert A scale. The scale is written on a single treble clef staff in the key of A major (three sharps). It consists of a sequence of eighth notes: A4, B4, C#5, D5, E5, F#5, G#5, A5, B5, C#6, D6, E6, F#6, G#6, A6, B6, C#7, D7, E7, F#7, G#7, A7, B7, C#8, D8. The scale is divided into two measures by a bar line. The first measure contains the first 14 notes, and the second measure contains the last 14 notes. A slur covers the entire scale. The key signature is indicated by three sharps (F#, C#, and G#) at the beginning of the staff.

12

Concert D

Musical notation for Concert D scale. The scale is written on a single treble clef staff in the key of D major (two sharps). It consists of a sequence of eighth notes: D4, E4, F#4, G4, A4, B4, C5, D5, E5, F#5, G5, A5, B5, C6, D6, E6, F#6, G6, A6, B6, C7, D7, E7, F#7, G7, A7, B7, C8, D8. The scale is divided into two measures by a bar line. The first measure contains the first 14 notes, and the second measure contains the last 14 notes. A slur covers the entire scale. The key signature is indicated by two sharps (F# and C#) at the beginning of the staff.

Oboe

Symphonic Band Scales

M. R. Jingles

Pass-Offs

♩ = 92

Concert G

Musical notation for Concert G scale in 4/4 time, starting on G4. The scale consists of 16 eighth notes: G4, A4, B4, C5, B4, A4, G4, F4, E4, D4, C4, B3, A3, G3, F3, E3. The notation includes a treble clef, a key signature of one sharp (F#), and a 4/4 time signature. The notes are grouped in pairs with slurs.

2 Concert C

Musical notation for Concert C scale in 4/4 time, starting on C4. The scale consists of 16 eighth notes: C4, D4, E4, F4, G4, A4, B4, C5, B4, A4, G4, F4, E4, D4, C4, B3. The notation includes a treble clef, a key signature of no sharps or flats, and a 4/4 time signature. The notes are grouped in pairs with slurs.

3 Concert F

Musical notation for Concert F scale in 4/4 time, starting on F3. The scale consists of 16 eighth notes: F3, G3, A3, B3, C4, D4, E4, F4, G4, A4, B4, C5, B4, A4, G4, F4. The notation includes a treble clef, a key signature of one flat (Bb), and a 4/4 time signature. The notes are grouped in pairs with slurs.

4 Concert Bb

Musical notation for Concert Bb scale in 4/4 time, starting on Bb3. The scale consists of 16 eighth notes: Bb3, C4, D4, Eb4, F4, G4, Ab4, Bb4, C5, Bb4, Ab4, G4, F4, Eb4, D4, C4. The notation includes a treble clef, a key signature of two flats (Bb, Eb), and a 4/4 time signature. The notes are grouped in pairs with slurs.

5 Concert Eb

Musical notation for Concert Eb scale in 4/4 time, starting on Eb3. The scale consists of 16 eighth notes: Eb3, F3, G3, Ab3, Bb3, C4, D4, Eb4, F4, G4, Ab4, Bb4, C5, Bb4, Ab4, G4. The notation includes a treble clef, a key signature of three flats (Eb, Ab, Bb), and a 4/4 time signature. The notes are grouped in pairs with slurs.

6 Concert Ab

Musical notation for Concert Ab scale in 4/4 time, starting on Ab3. The scale consists of 16 eighth notes: Ab3, Bb3, C4, D4, Eb4, F4, G4, Ab4, Bb4, C5, Bb4, Ab4, G4, F4, Eb4, D4. The notation includes a treble clef, a key signature of four flats (Ab, Bb, Eb, Fb), and a 4/4 time signature. The notes are grouped in pairs with slurs.

7 Concert Db

Musical notation for Concert Db scale in 4/4 time, starting on Db3. The scale consists of 16 eighth notes: Db3, Eb3, F3, G3, Ab3, Bb3, C4, D4, Eb4, F4, G4, Ab4, Bb4, C5, Bb4, Ab4. The notation includes a treble clef, a key signature of five flats (Db, Eb, Fb, Gb, Ab), and a 4/4 time signature. The notes are grouped in pairs with slurs.

8 Concert Gb

Musical notation for Concert Gb scale in 4/4 time, starting on Gb3. The scale consists of 16 eighth notes: Gb3, Ab3, Bb3, C4, D4, Eb4, F4, Gb4, Ab4, Bb4, C5, Bb4, Ab4, Gb4, F4, Eb4. The notation includes a treble clef, a key signature of six flats (Gb, Ab, Bb, Cb, Db, Eb), and a 4/4 time signature. The notes are grouped in pairs with slurs.

Symphonic Band Scales

Pass-Offs

♩ = 92

Concert G

Musical notation for Concert G scale in bass clef, 4/4 time. The scale starts on G2 and ascends to G3, then descends back to G2. It consists of quarter notes with slurs over the ascending and descending lines.

② Concert C

Musical notation for Concert C scale in bass clef, 4/4 time. The scale starts on C2 and ascends to C3, then descends back to C2. It consists of quarter notes with slurs over the ascending and descending lines.

③ Concert F

Musical notation for Concert F scale in bass clef, 4/4 time. The scale starts on F1 and ascends to F2, then descends back to F1. It consists of quarter notes with slurs over the ascending and descending lines.

④ Concert Bb

Musical notation for Concert Bb scale in bass clef, 4/4 time. The scale starts on Bb1 and ascends to Bb2, then descends back to Bb1. It consists of quarter notes with slurs over the ascending and descending lines.

⑤ Concert Eb

Musical notation for Concert Eb scale in bass clef, 4/4 time. The scale starts on Eb1 and ascends to Eb2, then descends back to Eb1. It consists of quarter notes with slurs over the ascending and descending lines.

⑥ Concert Ab

Musical notation for Concert Ab scale in bass clef, 4/4 time. The scale starts on Ab1 and ascends to Ab2, then descends back to Ab1. It consists of quarter notes with slurs over the ascending and descending lines.

⑦ Concert Db

Musical notation for Concert Db scale in bass clef, 4/4 time. The scale starts on Db1 and ascends to Db2, then descends back to Db1. It consists of quarter notes with slurs over the ascending and descending lines.

⑧ Concert Gb

Musical notation for Concert Gb scale in bass clef, 4/4 time. The scale starts on Gb1 and ascends to Gb2, then descends back to Gb1. It consists of quarter notes with slurs over the ascending and descending lines.

9

Concert B

Musical notation for Concert B scale. The scale is written on a bass clef staff in the key of D major (two sharps). It consists of a series of eighth notes with slurs, starting on D4 and ascending to D5, followed by a descending eighth-note scale back to D4. The notation includes a repeat sign at the end.

10

Concert E

Musical notation for Concert E scale. The scale is written on a bass clef staff in the key of E major (three sharps). It consists of a series of eighth notes with slurs, starting on E4 and ascending to E5, followed by a descending eighth-note scale back to E4. The notation includes a repeat sign at the end.

11

Concert A

Musical notation for Concert A scale. The scale is written on a bass clef staff in the key of A major (three sharps). It consists of a series of eighth notes with slurs, starting on A4 and ascending to A5, followed by a descending eighth-note scale back to A4. The notation includes a repeat sign at the end.

12

Concert D

Musical notation for Concert D scale. The scale is written on a bass clef staff in the key of D major (two sharps). It consists of a series of eighth notes with slurs, starting on D4 and ascending to D5, followed by a descending eighth-note scale back to D4. The notation includes a repeat sign at the end.

Symphonic Band Scales

Pass-Offs

1 $\text{♩} = 92$ Concert G

Musical notation for Concert G scale pass-off. The key signature has two sharps (F# and C#) and the time signature is 4/4. The scale consists of a series of eighth notes ascending and then descending, with a final quarter note. A slur covers the entire scale.

2 Concert C

Musical notation for Concert C scale pass-off. The key signature has two sharps (F# and C#) and the time signature is 4/4. The scale consists of a series of eighth notes ascending and then descending, with a final quarter note. A slur covers the entire scale.

3 Concert F

Musical notation for Concert F scale pass-off. The key signature has one sharp (F#) and the time signature is 4/4. The scale consists of a series of eighth notes ascending and then descending, with a final quarter note. A slur covers the entire scale.

4 Concert B \flat

Musical notation for Concert B \flat scale pass-off. The key signature has two flats (B \flat and E \flat) and the time signature is 4/4. The scale consists of a series of eighth notes ascending and then descending, with a final quarter note. A slur covers the entire scale.

5 Concert E \flat

Musical notation for Concert E \flat scale pass-off. The key signature has three flats (B \flat , E \flat , and A \flat) and the time signature is 4/4. The scale consists of a series of eighth notes ascending and then descending, with a final quarter note. A slur covers the entire scale.

6 Concert A \flat

Musical notation for Concert A \flat scale pass-off. The key signature has three flats (B \flat , E \flat , and A \flat) and the time signature is 4/4. The scale consists of a series of eighth notes ascending and then descending, with a final quarter note. A slur covers the entire scale.

7 Concert D \flat

Musical notation for Concert D \flat scale pass-off. The key signature has four flats (B \flat , E \flat , A \flat , and D \flat) and the time signature is 4/4. The scale consists of a series of eighth notes ascending and then descending, with a final quarter note. A slur covers the entire scale.

8 Concert G \flat

Musical notation for Concert G \flat scale pass-off. The key signature has four flats (B \flat , E \flat , A \flat , and D \flat) and the time signature is 4/4. The scale consists of a series of eighth notes ascending and then descending, with a final quarter note. A slur covers the entire scale.

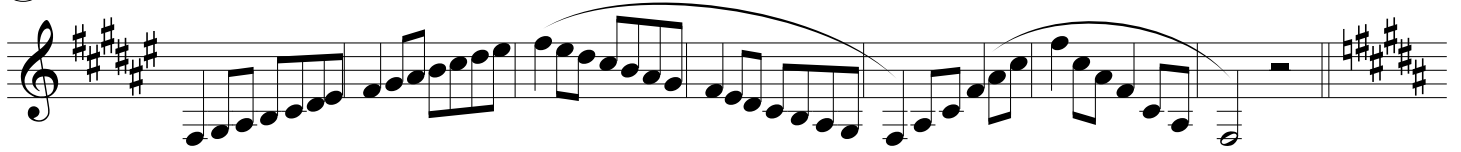
9

Concert B



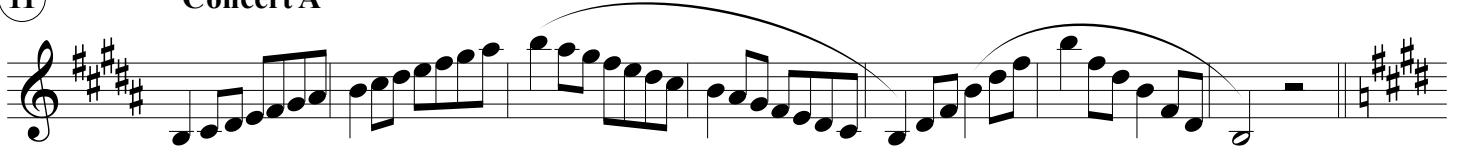
10

Concert E



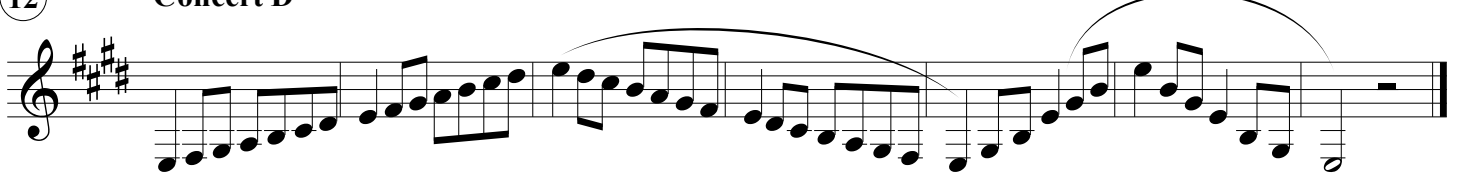
11

Concert A



12

Concert D



Symphonic Band Scales

Pass-Offs

① ♩ = 92 Concert G

Musical notation for Concert G scale in G major, 4/4 time. The scale consists of eight measures of eighth notes, each with a slur, followed by a whole note G. The key signature has three sharps (F#, C#, G#).

② Concert C

Musical notation for Concert C scale in C major, 4/4 time. The scale consists of eight measures of eighth notes, each with a slur, followed by a whole note C. The key signature has no sharps or flats.

③ Concert F

Musical notation for Concert F scale in F major, 4/4 time. The scale consists of eight measures of eighth notes, each with a slur, followed by a whole note F. The key signature has one sharp (F#).

④ Concert Bb

Musical notation for Concert Bb scale in Bb major, 4/4 time. The scale consists of eight measures of eighth notes, each with a slur, followed by a whole note Bb. The key signature has two flats (Bb, Eb).

⑤ Concert Eb

Musical notation for Concert Eb scale in Eb major, 4/4 time. The scale consists of eight measures of eighth notes, each with a slur, followed by a whole note Eb. The key signature has three flats (Eb, Ab, Db).

⑥ Concert Ab

Musical notation for Concert Ab scale in Ab major, 4/4 time. The scale consists of eight measures of eighth notes, each with a slur, followed by a whole note Ab. The key signature has four flats (Ab, Db, Gb, Cb).

⑦ Concert Db

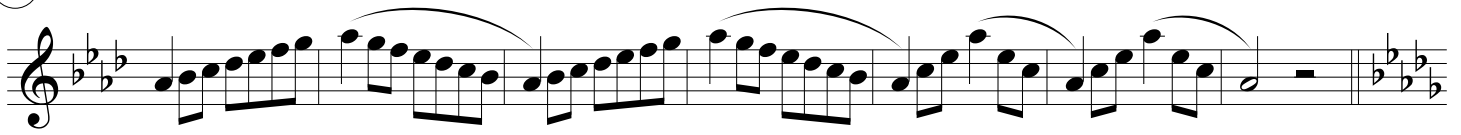
Musical notation for Concert Db scale in Db major, 4/4 time. The scale consists of eight measures of eighth notes, each with a slur, followed by a whole note Db. The key signature has five flats (Db, Ab, Db, Fb, Bb).

⑧ Concert Gb

Musical notation for Concert Gb scale in Gb major, 4/4 time. The scale consists of eight measures of eighth notes, each with a slur, followed by a whole note Gb. The key signature has six flats (Gb, Bb, Eb, Ab, Db, Gb).

9

Concert B



10

Concert E



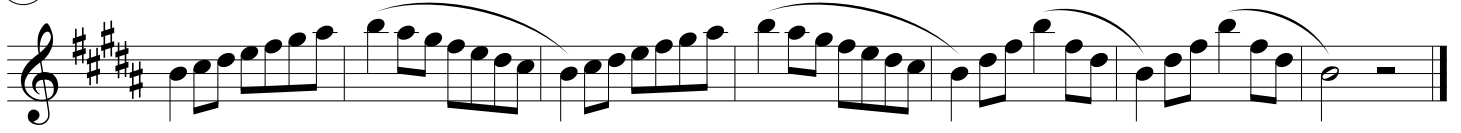
11

Concert A



12

Concert D



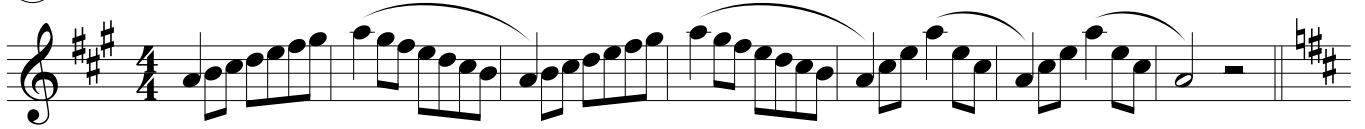
Tenor Sax

Symphonic Band Scales

M. R. Jingles

Pass-Offs

1 ♩ = 92 **Concert G**



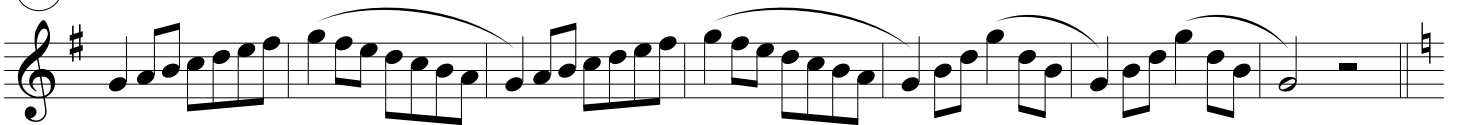
Musical notation for Concert G scale in G major, 4/4 time. The scale consists of 16 eighth notes: G4, A4, B4, C5, B4, A4, G4, F4, E4, D4, C4, B3, A3, G3, F3, E3. The notation includes a treble clef, a key signature of one sharp (F#), and a 4/4 time signature. The notes are grouped in pairs with slurs, and there are fermatas over the final G and F notes.

2 **Concert C**



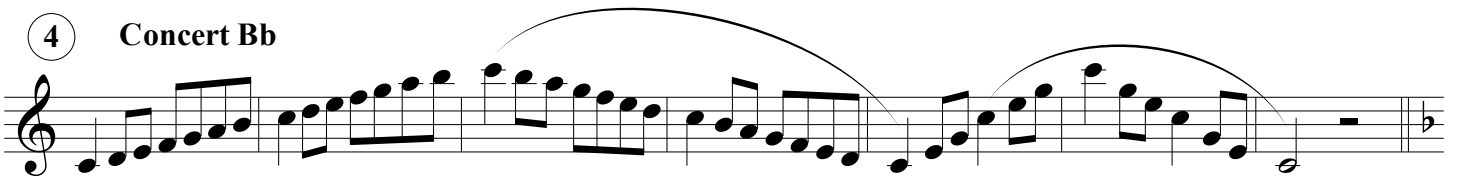
Musical notation for Concert C scale in C major, 4/4 time. The scale consists of 16 eighth notes: C4, D4, E4, F4, E4, D4, C4, B3, A3, G3, F3, E3, D3, C3, B2, A2. The notation includes a treble clef, a key signature of no sharps or flats, and a 4/4 time signature. The notes are grouped in pairs with slurs, and there are fermatas over the final C and B notes.

3 **Concert F**



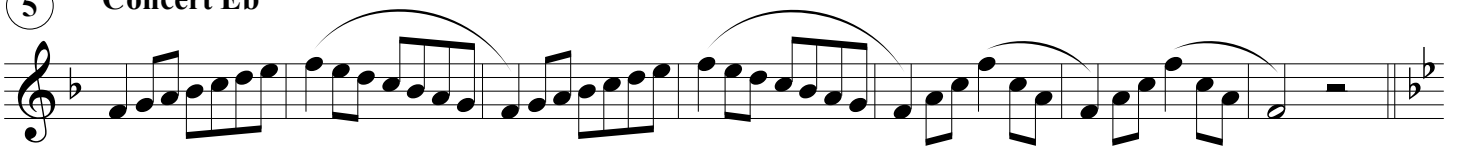
Musical notation for Concert F scale in F major, 4/4 time. The scale consists of 16 eighth notes: F4, G4, A4, B4, A4, G4, F4, E4, D4, C4, B3, A3, G3, F3, E3, D3. The notation includes a treble clef, a key signature of one flat (Bb), and a 4/4 time signature. The notes are grouped in pairs with slurs, and there are fermatas over the final F and E notes.

4 **Concert Bb**



Musical notation for Concert Bb scale in Bb major, 4/4 time. The scale consists of 16 eighth notes: Bb4, C5, Bb4, Ab4, Gb4, F4, Eb4, D4, C4, Bb3, Ab3, Gb3, F3, Eb3, D3, C3. The notation includes a treble clef, a key signature of two flats (Bb, Eb), and a 4/4 time signature. The notes are grouped in pairs with slurs, and there are fermatas over the final Bb and Ab notes.

5 **Concert Eb**



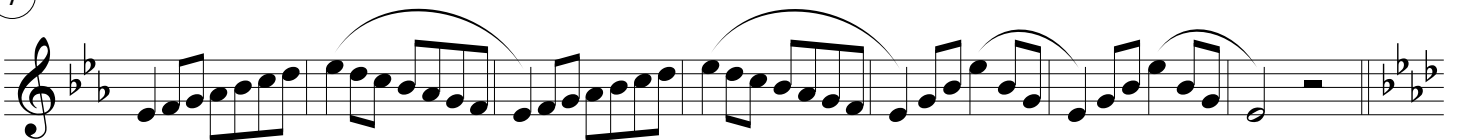
Musical notation for Concert Eb scale in Eb major, 4/4 time. The scale consists of 16 eighth notes: Eb4, F4, Eb4, Db4, Cb4, Bb3, Ab3, Gb3, F3, Eb3, Db3, Cb3, Bb2, Ab2, Gb2, F2. The notation includes a treble clef, a key signature of three flats (Bb, Eb, Ab), and a 4/4 time signature. The notes are grouped in pairs with slurs, and there are fermatas over the final Eb and Db notes.

6 **Concert Ab**



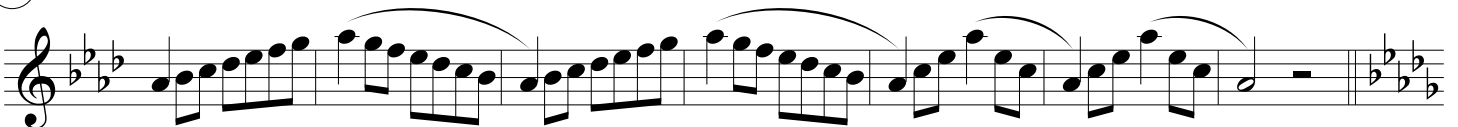
Musical notation for Concert Ab scale in Ab major, 4/4 time. The scale consists of 16 eighth notes: Ab4, Bb4, Ab4, Gb4, Fb4, Eb4, Db4, Cb4, Bb3, Ab3, Gb3, Fb3, Eb3, Db3, Cb3, Bb2. The notation includes a treble clef, a key signature of four flats (Bb, Eb, Ab, Db), and a 4/4 time signature. The notes are grouped in pairs with slurs, and there are fermatas over the final Ab and Gb notes.

7 **Concert Db**



Musical notation for Concert Db scale in Db major, 4/4 time. The scale consists of 16 eighth notes: Db4, Eb4, Db4, Cb4, Bb3, Ab3, Gb3, Fb3, Eb3, Db3, Cb3, Bb2, Ab2, Gb2, Fb2, Eb2. The notation includes a treble clef, a key signature of five flats (Bb, Eb, Ab, Db, Gb), and a 4/4 time signature. The notes are grouped in pairs with slurs, and there are fermatas over the final Db and Cb notes.

8 **Concert Gb**



Musical notation for Concert Gb scale in Gb major, 4/4 time. The scale consists of 16 eighth notes: Gb4, Ab4, Gb4, Fb4, Eb4, Db4, Cb4, Bb3, Ab3, Gb3, Fb3, Eb3, Db3, Cb3, Bb2, Ab2. The notation includes a treble clef, a key signature of six flats (Bb, Eb, Ab, Db, Gb, Cb), and a 4/4 time signature. The notes are grouped in pairs with slurs, and there are fermatas over the final Gb and Fb notes.

9

Concert B

Musical notation for Concert B scale. The scale is written on a single staff in treble clef with a key signature of three flats (B-flat major). It consists of an ascending eighth-note scale followed by a descending eighth-note scale, with a final whole note chord. The ascending scale is: B-flat, C, D, E-flat, F, G, A-flat, B-flat. The descending scale is: A-flat, G, F, E-flat, D, C, B-flat. The final chord is a B-flat major triad (B-flat, D, F).

10

Concert E

Musical notation for Concert E scale. The scale is written on a single staff in treble clef with a key signature of three sharps (E major). It consists of an ascending eighth-note scale followed by a descending eighth-note scale, with a final whole note chord. The ascending scale is: E, F-sharp, G-sharp, A, B, C-sharp, D-sharp, E. The descending scale is: D-sharp, C-sharp, B, A, G-sharp, F-sharp, E. The final chord is an E major triad (E, G-sharp, B).

11

Concert A

Musical notation for Concert A scale. The scale is written on a single staff in treble clef with a key signature of four sharps (A major). It consists of an ascending eighth-note scale followed by a descending eighth-note scale, with a final whole note chord. The ascending scale is: A, B, C-sharp, D-sharp, E, F-sharp, G-sharp, A. The descending scale is: G-sharp, F-sharp, E, D-sharp, C-sharp, B, A. The final chord is an A major triad (A, C-sharp, E).

12

Concert D

Musical notation for Concert D scale. The scale is written on a single staff in treble clef with a key signature of two sharps (D major). It consists of an ascending eighth-note scale followed by a descending eighth-note scale, with a final whole note chord. The ascending scale is: D, E, F-sharp, G, A, B, C-sharp, D. The descending scale is: C-sharp, B, A, G, F-sharp, E, D. The final chord is a D major triad (D, F-sharp, A).

Symphonic Band Scales

Pass-Offs

① ♩ = 92 Concert G

Musical notation for Concert G scale in 4/4 time, starting on G4. The scale consists of eighth notes: G4, A4, B4, C5, B4, A4, G4, F#4, E4, D4, C4, B3, A3, G3, F#3, E3, D3, C3, B2, A2, G2. The piece concludes with a final G4 note.

② Concert C

Musical notation for Concert C scale in 4/4 time, starting on C4. The scale consists of eighth notes: C4, D4, E4, F4, E4, D4, C4, B3, A3, G3, F3, E3, D3, C3, B2, A2, G2, F2, E2, D2, C2, B1, A1, G1, F1, E1, D1, C1. The piece concludes with a final C4 note.

③ Concert F

Musical notation for Concert F scale in 4/4 time, starting on F3. The scale consists of eighth notes: F3, G3, A3, B3, A3, G3, F3, E3, D3, C3, B2, A2, G2, F2, E2, D2, C2, B1, A1, G1, F1, E1, D1, C1, B0, A0, G0, F0, E0, D0, C0. The piece concludes with a final F3 note.

④ Concert Bb

Musical notation for Concert Bb scale in 4/4 time, starting on Bb3. The scale consists of eighth notes: Bb3, Ab3, Gb3, F3, E3, D3, C3, B2, Ab2, Gb2, F2, E2, D2, C2, B1, Ab1, Gb1, F1, E1, D1, C1, B0, Ab0, Gb0, F0, E0, D0, C0, B0, Ab0, Gb0, F0, E0, D0, C0. The piece concludes with a final Bb3 note.

⑤ Concert Eb

Musical notation for Concert Eb scale in 4/4 time, starting on Eb3. The scale consists of eighth notes: Eb3, Db3, Cb3, B2, Ab2, Gb2, F2, E2, D2, C2, B1, Ab1, Gb1, F1, E1, D1, C1, B0, Ab0, Gb0, F0, E0, D0, C0, B0, Ab0, Gb0, F0, E0, D0, C0. The piece concludes with a final Eb3 note.

⑥ Concert Ab

Musical notation for Concert Ab scale in 4/4 time, starting on Ab3. The scale consists of eighth notes: Ab3, Gb3, F3, E3, D3, C3, B2, Ab2, Gb2, F2, E2, D2, C2, B1, Ab1, Gb1, F1, E1, D1, C1, B0, Ab0, Gb0, F0, E0, D0, C0, B0, Ab0, Gb0, F0, E0, D0, C0. The piece concludes with a final Ab3 note.

⑦ Concert Db

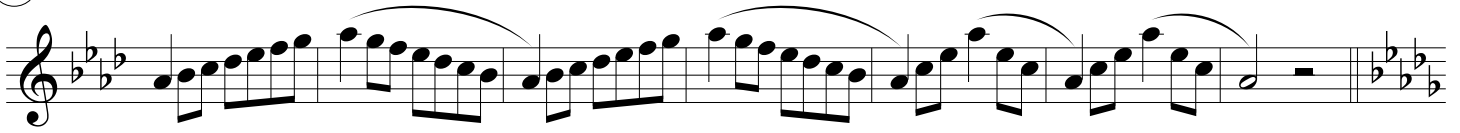
Musical notation for Concert Db scale in 4/4 time, starting on Db3. The scale consists of eighth notes: Db3, Cb3, B2, Ab2, Gb2, F2, E2, D2, C2, B1, Ab1, Gb1, F1, E1, D1, C1, B0, Ab0, Gb0, F0, E0, D0, C0, B0, Ab0, Gb0, F0, E0, D0, C0. The piece concludes with a final Db3 note.

⑧ Concert Gb

Musical notation for Concert Gb scale in 4/4 time, starting on Gb3. The scale consists of eighth notes: Gb3, F3, E3, D3, C3, B2, Ab2, Gb2, F2, E2, D2, C2, B1, Ab1, Gb1, F1, E1, D1, C1, B0, Ab0, Gb0, F0, E0, D0, C0, B0, Ab0, Gb0, F0, E0, D0, C0. The piece concludes with a final Gb3 note.

9

Concert B



10

Concert E



11

Concert A



12

Concert D



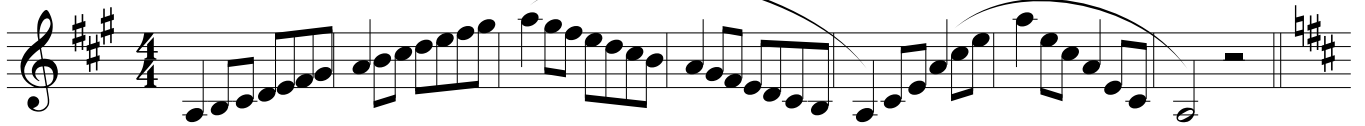
Trumpet in B \flat

Symphonic Band Scales

M. R. Jingles

Pass-Offs

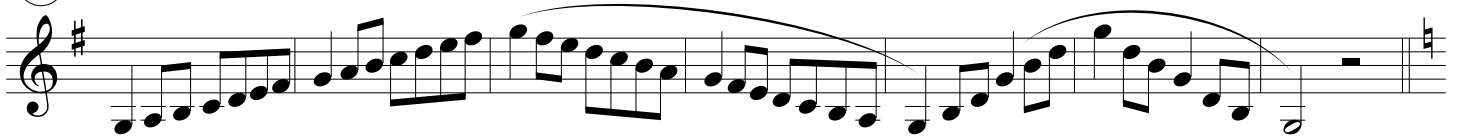
1 $\text{♩} = 92$ Concert G



2 Concert C



3 Concert F



4 Concert B \flat



5 Concert E \flat



6 Concert A \flat



7 Concert D \flat



8 Concert G \flat



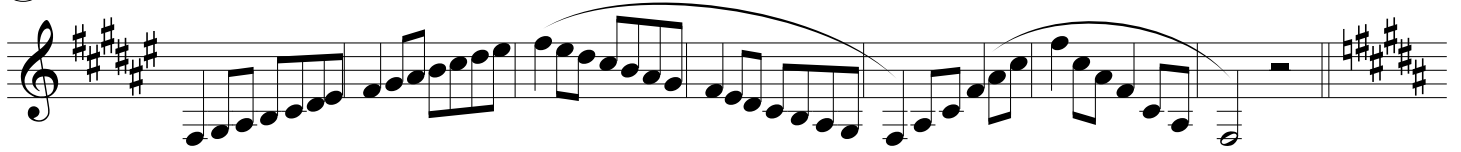
9

Concert B



10

Concert E



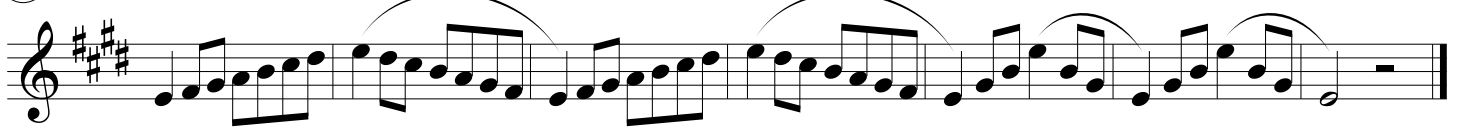
11

Concert A



12

Concert D



9

Concert B

Musical notation for Concert B scale. The scale is written on a single treble clef staff in the key of D major (indicated by two sharps: F# and C#). The scale consists of a sequence of eighth notes: D4, E4, F#4, G4, A4, B4, C#5, D5, E5, F#5, G5, A5, B5, C#6, D6, E6, F#6, G6, A6, B6, C#7, D7, E7, F#7, G7, A7, B7, C#8, D8. The scale is divided into four measures by bar lines. The first measure contains the first six notes, the second measure contains the next six notes, the third measure contains the next six notes, and the fourth measure contains the final six notes. The notes are grouped into pairs of eighth notes, and there are slurs over the first two pairs in each measure.

10

Concert E

Musical notation for Concert E scale. The scale is written on a single treble clef staff in the key of E major (indicated by three sharps: F#, C#, and G#). The scale consists of a sequence of eighth notes: E4, F#4, G#4, A4, B4, C#5, D5, E5, F#5, G#5, A5, B5, C#6, D6, E6, F#6, G#6, A6, B6, C#7, D7, E7, F#7, G#7, A7, B7, C#8, D8. The scale is divided into four measures by bar lines. The first measure contains the first six notes, the second measure contains the next six notes, the third measure contains the next six notes, and the fourth measure contains the final six notes. The notes are grouped into pairs of eighth notes, and there are slurs over the first two pairs in each measure.

11

Concert A

Musical notation for Concert A scale. The scale is written on a single treble clef staff in the key of A major (indicated by three sharps: F#, C#, and G#). The scale consists of a sequence of eighth notes: A4, B4, C#5, D5, E5, F#5, G#5, A5, B5, C#6, D6, E6, F#6, G#6, A6, B6, C#7, D7, E7, F#7, G#7, A7, B7, C#8, D8. The scale is divided into four measures by bar lines. The first measure contains the first six notes, the second measure contains the next six notes, the third measure contains the next six notes, and the fourth measure contains the final six notes. The notes are grouped into pairs of eighth notes, and there are slurs over the first two pairs in each measure.

12

Concert D

Musical notation for Concert D scale. The scale is written on a single treble clef staff in the key of D major (indicated by two sharps: F# and C#). The scale consists of a sequence of eighth notes: D4, E4, F#4, G4, A4, B4, C#5, D5, E5, F#5, G5, A5, B5, C#6, D6, E6, F#6, G6, A6, B6, C#7, D7, E7, F#7, G7, A7, B7, C#8, D8. The scale is divided into four measures by bar lines. The first measure contains the first six notes, the second measure contains the next six notes, the third measure contains the next six notes, and the fourth measure contains the final six notes. The notes are grouped into pairs of eighth notes, and there are slurs over the first two pairs in each measure.

Trombone

Symphonic Band Scales

M. R. Jingles

Pass-Offs

♩ = 92

Concert G

Concert G scale in bass clef, 4/4 time. The scale starts on G2 and ascends to G3, then descends back to G2. It consists of quarter notes with slurs over the ascending and descending lines.

② Concert C

Concert C scale in bass clef, 4/4 time. The scale starts on C2 and ascends to C3, then descends back to C2. It consists of quarter notes with slurs over the ascending and descending lines.

③ Concert F

Concert F scale in bass clef, 4/4 time. The scale starts on F1 and ascends to F2, then descends back to F1. It consists of quarter notes with slurs over the ascending and descending lines.

④ Concert Bb

Concert Bb scale in bass clef, 4/4 time. The scale starts on Bb1 and ascends to Bb2, then descends back to Bb1. It consists of quarter notes with slurs over the ascending and descending lines.

⑤ Concert Eb

Concert Eb scale in bass clef, 4/4 time. The scale starts on Eb1 and ascends to Eb2, then descends back to Eb1. It consists of quarter notes with slurs over the ascending and descending lines.

⑥ Concert Ab

Concert Ab scale in bass clef, 4/4 time. The scale starts on Ab1 and ascends to Ab2, then descends back to Ab1. It consists of quarter notes with slurs over the ascending and descending lines.

⑦ Concert Db

Concert Db scale in bass clef, 4/4 time. The scale starts on Db1 and ascends to Db2, then descends back to Db1. It consists of quarter notes with slurs over the ascending and descending lines.

⑧ Concert Gb

Concert Gb scale in bass clef, 4/4 time. The scale starts on Gb1 and ascends to Gb2, then descends back to Gb1. It consists of quarter notes with slurs over the ascending and descending lines.

9

Concert B

Musical notation for Concert B scale. It is a single-line bass clef staff in the key of D major (two sharps). The scale consists of 12 notes: D4, E4, F#4, G4, A4, B4, C5, B4, A4, G4, F#4, E4. The notes are grouped into six pairs, each pair connected by a slur. The final note, E4, is followed by a double bar line and a repeat sign.

10

Concert E

Musical notation for Concert E scale. It is a single-line bass clef staff in the key of E major (three sharps). The scale consists of 12 notes: E4, F#4, G#4, A4, B4, C#4, D5, C#4, B4, A4, G#4, F#4. The notes are grouped into six pairs, each pair connected by a slur. The final note, F#4, is followed by a double bar line and a repeat sign.

11

Concert A

Musical notation for Concert A scale. It is a single-line bass clef staff in the key of A major (three sharps). The scale consists of 12 notes: A4, B4, C#4, D5, E5, F#5, G#5, F#5, E5, D5, C#4, B4. The notes are grouped into six pairs, each pair connected by a slur. The final note, B4, is followed by a double bar line and a repeat sign.

12

Concert D

Musical notation for Concert D scale. It is a single-line bass clef staff in the key of D major (two sharps). The scale consists of 12 notes: D4, E4, F#4, G4, A4, B4, C5, B4, A4, G4, F#4, E4. The notes are grouped into six pairs, each pair connected by a slur. The final note, E4, is followed by a double bar line and a repeat sign.

Baritone (B.C.)

Symphonic Band Scales

M. R. Jingles

Pass-Offs

♩ = 92

Concert G

Concert G scale in bass clef, 4/4 time. The scale starts on G2 and ascends through G3, A3, B3, C4, D4, E4, F4, G4, A4, B4, C5, D5, E5, F5, G5, then descends through F5, E5, D5, C5, B4, A4, G4, F4, E4, D4, C4, B3, A3, G3, and ends on G2. The piece concludes with a double bar line and a final G2 note.

2 Concert C

Concert C scale in bass clef, 4/4 time. The scale starts on C2 and ascends through C3, D3, E3, F3, G3, A3, B3, C4, D4, E4, F4, G4, A4, B4, C5, D5, E5, F5, G5, then descends through F5, E5, D5, C5, B4, A4, G4, F4, E4, D4, C4, B3, A3, G3, and ends on C2. The piece concludes with a double bar line and a final C2 note.

3 Concert F

Concert F scale in bass clef, 4/4 time. The scale starts on F2 and ascends through F3, G3, A3, B3, C4, D4, E4, F4, G4, A4, B4, C5, D5, E5, F5, G5, then descends through F5, E5, D5, C5, B4, A4, G4, F4, E4, D4, C4, B3, A3, G3, and ends on F2. The piece concludes with a double bar line and a final F2 note.

4 Concert Bb

Concert Bb scale in bass clef, 4/4 time. The scale starts on Bb2 and ascends through Bb3, C4, D4, Eb4, F4, G4, Ab4, Bb4, C5, D5, Eb5, F5, G5, then descends through F5, Eb5, D5, C5, Bb4, Ab4, G4, F4, Eb4, D4, C4, Bb3, Ab3, and ends on Bb2. The piece concludes with a double bar line and a final Bb2 note.

5 Concert Eb

Concert Eb scale in bass clef, 4/4 time. The scale starts on Eb2 and ascends through Eb3, F3, G3, Ab3, Bb3, C4, D4, Eb4, F4, G4, Ab4, Bb4, C5, D5, Eb5, F5, G5, then descends through F5, Eb5, D5, C5, Bb4, Ab4, G4, F4, Eb4, D4, C4, Bb3, Ab3, and ends on Eb2. The piece concludes with a double bar line and a final Eb2 note.

6 Concert Ab

Concert Ab scale in bass clef, 4/4 time. The scale starts on Ab2 and ascends through Ab3, Bb3, C4, D4, Eb4, F4, G4, Ab4, Bb4, C5, D5, Eb5, F5, G5, then descends through F5, Eb5, D5, C5, Bb4, Ab4, G4, F4, Eb4, D4, C4, Bb3, Ab3, and ends on Ab2. The piece concludes with a double bar line and a final Ab2 note.

7 Concert Db

Concert Db scale in bass clef, 4/4 time. The scale starts on Db2 and ascends through Db3, Eb3, F3, G3, Ab3, Bb3, C4, D4, Eb4, F4, G4, Ab4, Bb4, C5, D5, Eb5, F5, G5, then descends through F5, Eb5, D5, C5, Bb4, Ab4, G4, F4, Eb4, D4, C4, Bb3, Ab3, and ends on Db2. The piece concludes with a double bar line and a final Db2 note.

8 Concert Gb

Concert Gb scale in bass clef, 4/4 time. The scale starts on Gb2 and ascends through Gb3, Ab3, Bb3, C4, D4, Eb4, F4, G4, Ab4, Bb4, C5, D5, Eb5, F5, G5, then descends through F5, Eb5, D5, C5, Bb4, Ab4, G4, F4, Eb4, D4, C4, Bb3, Ab3, and ends on Gb2. The piece concludes with a double bar line and a final Gb2 note.

9

Concert B

Musical notation for Concert B scale. It is a single-line bass clef staff in the key of D major (two sharps). The scale consists of 12 notes: D4, E4, F#4, G4, A4, B4, C5, B4, A4, G4, F#4, E4. The notes are grouped into six pairs, each pair connected by a slur. The final note is a whole note.

10

Concert E

Musical notation for Concert E scale. It is a single-line bass clef staff in the key of E major (three sharps). The scale consists of 12 notes: E4, F#4, G#4, A4, B4, C#5, B4, A4, G#4, F#4, E4. The notes are grouped into six pairs, each pair connected by a slur. The final note is a whole note.

11

Concert A

Musical notation for Concert A scale. It is a single-line bass clef staff in the key of A major (three sharps). The scale consists of 12 notes: A4, B4, C#5, B4, A4, G#4, F#4, E4, D4, C4, B3, A3. The notes are grouped into six pairs, each pair connected by a slur. The final note is a whole note.

12

Concert D

Musical notation for Concert D scale. It is a single-line bass clef staff in the key of D major (two sharps). The scale consists of 12 notes: D4, E4, F#4, G4, A4, B4, C5, B4, A4, G4, F#4, E4. The notes are grouped into six pairs, each pair connected by a slur. The final note is a whole note.

Tuba

Symphonic Band Scales

M. R. Jingles

Pass-Offs

♩ = 92

Concert G

Concert G scale in bass clef, 4/4 time. The scale starts on G2 and ascends to G3, then descends back to G2. The notes are: G2, A2, B2, C3, D3, E3, F3, G3, F3, E3, D3, C3, B2, A2, G2. The scale is divided into four measures by phrasing slurs.

2 Concert C

Concert C scale in bass clef, 4/4 time. The scale starts on C2 and ascends to C3, then descends back to C2. The notes are: C2, D2, E2, F2, G2, A2, B2, C3, B2, A2, G2, F2, E2, D2, C2. The scale is divided into four measures by phrasing slurs.

3 Concert F

Concert F scale in bass clef, 4/4 time. The scale starts on F1 and ascends to F2, then descends back to F1. The notes are: F1, G1, A1, B1, C2, D2, E2, F2, E2, D2, C2, B1, A1, G1, F1. The scale is divided into four measures by phrasing slurs.

4 Concert Bb

Concert Bb scale in bass clef, 4/4 time. The scale starts on Bb1 and ascends to Bb2, then descends back to Bb1. The notes are: Bb1, C2, D2, Eb2, F2, G2, Ab2, Bb2, Ab2, G2, F2, Eb2, D2, C2, Bb1. The scale is divided into four measures by phrasing slurs.

5 Concert Eb

Concert Eb scale in bass clef, 4/4 time. The scale starts on Eb1 and ascends to Eb2, then descends back to Eb1. The notes are: Eb1, F1, G1, Ab1, Bb1, C2, D2, Eb2, D2, C2, Bb1, Ab1, G1, F1, Eb1. The scale is divided into four measures by phrasing slurs.

6 Concert Ab

Concert Ab scale in bass clef, 4/4 time. The scale starts on Ab1 and ascends to Ab2, then descends back to Ab1. The notes are: Ab1, Bb1, C2, D2, Eb2, F2, G2, Ab2, G2, F2, Eb2, D2, C2, Bb1, Ab1. The scale is divided into four measures by phrasing slurs.

7 Concert Db

Concert Db scale in bass clef, 4/4 time. The scale starts on Db1 and ascends to Db2, then descends back to Db1. The notes are: Db1, Eb1, F1, G1, Ab1, Bb1, C2, Db2, C2, Bb1, Ab1, G1, F1, Eb1, Db1. The scale is divided into four measures by phrasing slurs.

8 Concert Gb

Concert Gb scale in bass clef, 4/4 time. The scale starts on Gb1 and ascends to Gb2, then descends back to Gb1. The notes are: Gb1, Ab1, Bb1, C2, Db2, Eb2, F2, Gb2, F2, Eb2, Db2, C2, Bb1, Ab1, Gb1. The scale is divided into four measures by phrasing slurs.

9

Concert B

Musical notation for Concert B scale, bass clef, key signature of three sharps (F#, C#, G#), and common time. The scale consists of a series of eighth notes with slurs, starting on C2 and ending on C3.

10

Concert E

Musical notation for Concert E scale, bass clef, key signature of three sharps (F#, C#, G#), and common time. The scale consists of a series of eighth notes with slurs, starting on C2 and ending on C3.

11

Concert A

Musical notation for Concert A scale, bass clef, key signature of two sharps (F#, C#), and common time. The scale consists of a series of eighth notes with slurs, starting on C2 and ending on C3.

12

Concert D

Musical notation for Concert D scale, bass clef, key signature of two sharps (F#, C#), and common time. The scale consists of a series of eighth notes with slurs, starting on C2 and ending on C3.

Mallets

Symphonic Band Scales

M. R. Jingles

Pass-Offs

1 = 92

Concert G

Musical notation for Concert G scale in 4/4 time, starting on G4. The scale consists of 12 notes: G4, A4, B4, C5, B4, A4, G4, F4, E4, D4, C4, B3. The notes are grouped into four measures of three notes each, with a final whole note G4. The first measure is marked with a circled '1' and a tempo of 92.

2 Concert C

Musical notation for Concert C scale in 4/4 time, starting on C4. The scale consists of 12 notes: C4, D4, E4, F4, E4, D4, C4, B3, A3, G3, F3, E3. The notes are grouped into four measures of three notes each, with a final whole note C4.

3 Concert F

Musical notation for Concert F scale in 4/4 time, starting on F3. The scale consists of 12 notes: F3, G3, A3, B3, A3, G3, F3, E3, D3, C3, B2, A2. The notes are grouped into four measures of three notes each, with a final whole note F3.

4 Concert Bb

Musical notation for Concert Bb scale in 4/4 time, starting on Bb3. The scale consists of 12 notes: Bb3, C4, D4, Eb4, D4, C4, Bb3, Ab3, G3, F3, Eb3, D2. The notes are grouped into four measures of three notes each, with a final whole note Bb3.

5 Concert Eb

Musical notation for Concert Eb scale in 4/4 time, starting on Eb3. The scale consists of 12 notes: Eb3, F3, G3, Ab3, G3, F3, Eb3, D3, C3, B2, Ab2, G2. The notes are grouped into four measures of three notes each, with a final whole note Eb3.

6 Concert Ab

Musical notation for Concert Ab scale in 4/4 time, starting on Ab3. The scale consists of 12 notes: Ab3, Bb3, C4, Db4, C4, Bb3, Ab3, G3, F3, Eb3, D3, C3. The notes are grouped into four measures of three notes each, with a final whole note Ab3.

7 Concert Db

Musical notation for Concert Db scale in 4/4 time, starting on Db3. The scale consists of 12 notes: Db3, Eb3, F3, Gb3, F3, Eb3, Db3, C3, B2, Ab2, G2, F2. The notes are grouped into four measures of three notes each, with a final whole note Db3.

8 Concert Gb

Musical notation for Concert Gb scale in 4/4 time, starting on Gb3. The scale consists of 12 notes: Gb3, Ab3, Bb3, C4, Bb3, Ab3, Gb3, F3, Eb3, D3, C3, B2. The notes are grouped into four measures of three notes each, with a final whole note Gb3.

9

Concert B

Musical notation for Concert B scale. The scale is written on a treble clef staff with a key signature of three sharps (F#, C#, G#). It consists of a series of eighth notes ascending and then descending, with a final whole note. The scale is divided into four measures by a large slur. The first measure contains the first four notes (F#, G#, A, B), the second measure contains the next four notes (C, D, E, F#), the third measure contains the next four notes (G#, A, B, C), and the fourth measure contains the final four notes (D, E, F#, G#) followed by a whole rest.

10

Concert E

Musical notation for Concert E scale. The scale is written on a treble clef staff with a key signature of three sharps (F#, C#, G#). It consists of a series of eighth notes ascending and then descending, with a final whole note. The scale is divided into four measures by a large slur. The first measure contains the first four notes (F#, G#, A, B), the second measure contains the next four notes (C, D, E, F#), the third measure contains the next four notes (G#, A, B, C), and the fourth measure contains the final four notes (D, E, F#, G#) followed by a whole rest.

11

Concert A

Musical notation for Concert A scale. The scale is written on a treble clef staff with a key signature of two sharps (F#, C#). It consists of a series of eighth notes ascending and then descending, with a final whole note. The scale is divided into four measures by a large slur. The first measure contains the first four notes (F#, G#, A, B), the second measure contains the next four notes (C, D, E, F#), the third measure contains the next four notes (G#, A, B, C), and the fourth measure contains the final four notes (D, E, F#, G#) followed by a whole rest.

12

Concert D

Musical notation for Concert D scale. The scale is written on a treble clef staff with a key signature of one sharp (F#). It consists of a series of eighth notes ascending and then descending, with a final whole note. The scale is divided into four measures by a large slur. The first measure contains the first four notes (F#, G#, A, B), the second measure contains the next four notes (C, D, E, F#), the third measure contains the next four notes (G#, A, B, C), and the fourth measure contains the final four notes (D, E, F#, G#) followed by a whole rest.