

# Jazz Band Blues Scales

## Pass-Offs

♩ = 92

1 Concert G

Musical notation for the Concert G scale, starting on G4 and ending on G5. The scale is written in treble clef with a key signature of one sharp (F#) and a 4/4 time signature. It consists of 12 notes: G, A, B, C, D, E, F#, G, A, B, C, D, E, F, G.

2 Concert C

Musical notation for the Concert C scale, starting on C4 and ending on C5. The scale is written in treble clef with a key signature of one flat (F) and a 4/4 time signature. It consists of 12 notes: C, D, E, F, G, A, B, C, D, E, F, G, A, B, C.

3 Concert F

Musical notation for the Concert F scale, starting on F3 and ending on F4. The scale is written in treble clef with a key signature of two flats (Bb, Eb) and a 4/4 time signature. It consists of 12 notes: F, G, Ab, Bb, C, D, Eb, F, G, Ab, Bb, C, D, Eb, F.

4 Concert Bb

Musical notation for the Concert Bb scale, starting on Bb3 and ending on Bb4. The scale is written in treble clef with a key signature of two flats (Bb, Eb) and a 4/4 time signature. It consists of 12 notes: Bb, C, D, Eb, F, G, Ab, Bb, C, D, Eb, F, G, Ab, Bb.

5 Concert Eb

Musical notation for the Concert Eb scale, starting on Eb3 and ending on Eb4. The scale is written in treble clef with a key signature of three flats (Bb, Eb, Ab) and a 4/4 time signature. It consists of 12 notes: Eb, F, G, Ab, Bb, C, D, Eb, F, G, Ab, Bb, C, D, Eb.

6 Concert Ab

Musical notation for the Concert Ab scale, starting on Ab3 and ending on Ab4. The scale is written in treble clef with a key signature of three flats (Bb, Eb, Ab) and a 4/4 time signature. It consists of 12 notes: Ab, Bb, C, D, Eb, F, G, Ab, Bb, C, D, Eb, F, G, Ab.

7 Concert Db

Musical notation for the Concert Db scale, starting on Db3 and ending on Db4. The scale is written in treble clef with a key signature of four flats (Bb, Eb, Ab, Db) and a 4/4 time signature. It consists of 12 notes: Db, Eb, F, G, Ab, Bb, C, Db, Eb, F, G, Ab, Bb, C, Db.

8 Concert Gb

Musical notation for the Concert Gb scale, starting on Gb3 and ending on Gb4. The scale is written in treble clef with a key signature of four flats (Bb, Eb, Ab, Db) and a 4/4 time signature. It consists of 12 notes: Gb, Ab, Bb, C, D, Eb, F, Gb, Ab, Bb, C, D, Eb, F, Gb.

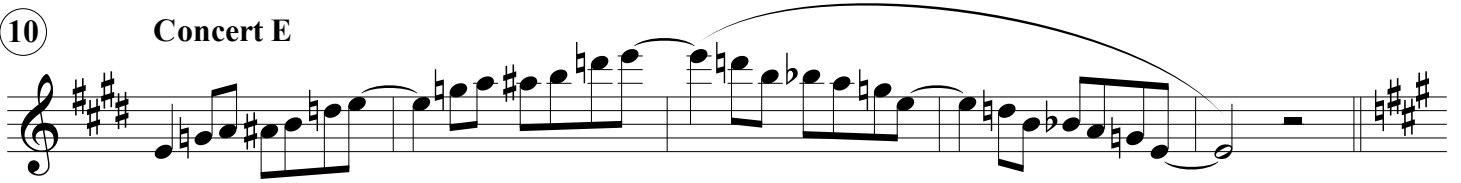
9

**Concert B**



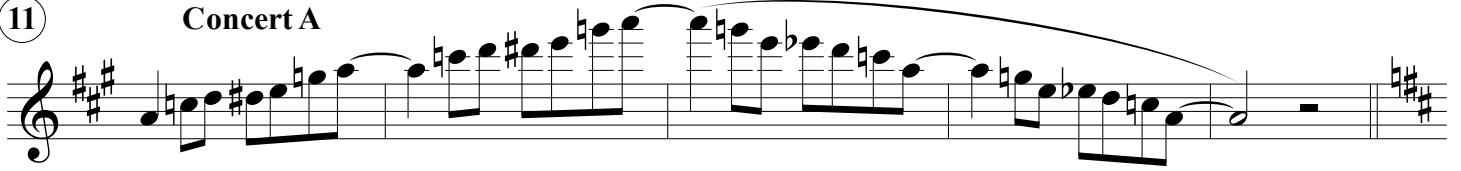
10

**Concert E**



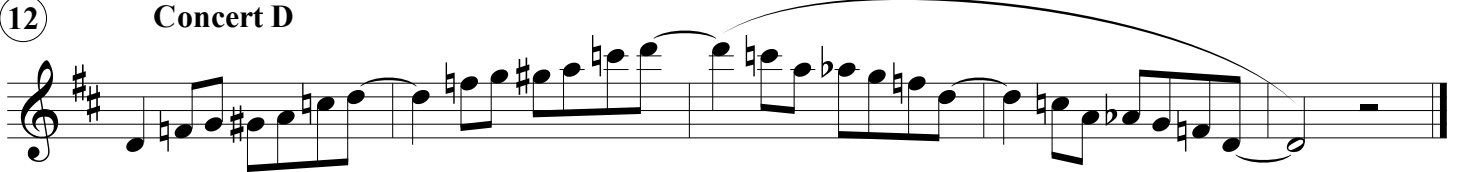
11

**Concert A**



12

**Concert D**



Oboe

# Jazz Band Blues Scales

M. R. Jingles

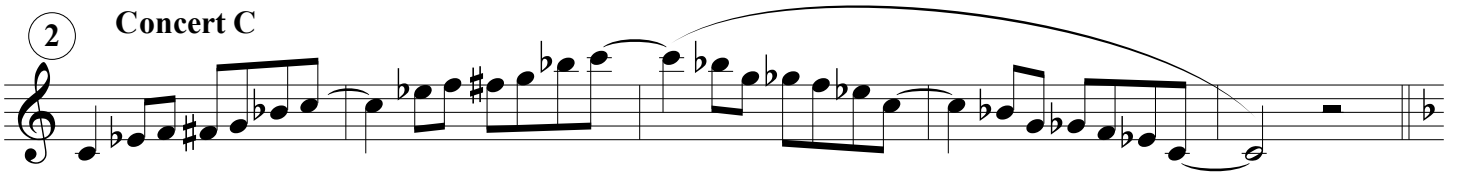
## Pass-Offs

♩ = 92

1 Concert G



2 Concert C



3 Concert F



4 Concert Bb



5 Concert Eb



6 Concert Ab



7 Concert Db



8 Concert Gb





# Jazz Band Blues Scales

## Pass-Offs

♩ = 92

Concert G

First musical staff showing the Concert G scale in bass clef, 4/4 time. The scale starts on G4 and ends on G4. It consists of 12 notes: G, A, B, C, D, E, F, G, A, B, C, D, E, F, G. The notes are grouped into four measures of three notes each, with a final whole note G.

2 Concert C

Second musical staff showing the Concert C scale in bass clef, 4/4 time. The scale starts on C4 and ends on C4. It consists of 12 notes: C, D, E, F, G, A, B, C, D, E, F, G, A, B, C. The notes are grouped into four measures of three notes each, with a final whole note C.

3 Concert F

Third musical staff showing the Concert F scale in bass clef, 4/4 time. The scale starts on F3 and ends on F3. It consists of 12 notes: F, G, A, B, C, D, E, F, G, A, B, C, D, E, F. The notes are grouped into four measures of three notes each, with a final whole note F.

4 Concert Bb

Fourth musical staff showing the Concert Bb scale in bass clef, 4/4 time. The scale starts on Bb3 and ends on Bb3. It consists of 12 notes: Bb, C, D, Eb, F, G, Ab, Bb, C, D, Eb, F, G, Ab, Bb. The notes are grouped into four measures of three notes each, with a final whole note Bb.

5 Concert Eb

Fifth musical staff showing the Concert Eb scale in bass clef, 4/4 time. The scale starts on Eb3 and ends on Eb3. It consists of 12 notes: Eb, F, G, Ab, Bb, C, Db, Eb, F, G, Ab, Bb, C, Db, Eb. The notes are grouped into four measures of three notes each, with a final whole note Eb.

6 Concert Ab

Sixth musical staff showing the Concert Ab scale in bass clef, 4/4 time. The scale starts on Ab3 and ends on Ab3. It consists of 12 notes: Ab, Bb, C, Db, Eb, F, G, Ab, Bb, C, Db, Eb, F, G, Ab. The notes are grouped into four measures of three notes each, with a final whole note Ab.

7 Concert Db

Seventh musical staff showing the Concert Db scale in bass clef, 4/4 time. The scale starts on Db3 and ends on Db3. It consists of 12 notes: Db, Eb, F, G, Ab, Bb, C, Db, Eb, F, G, Ab, Bb, C, Db. The notes are grouped into four measures of three notes each, with a final whole note Db.

8 Concert Gb

Eighth musical staff showing the Concert Gb scale in bass clef, 4/4 time. The scale starts on Gb3 and ends on Gb3. It consists of 12 notes: Gb, Ab, Bb, C, Db, Eb, F, Gb, Ab, Bb, C, Db, Eb, F, Gb. The notes are grouped into four measures of three notes each, with a final whole note Gb.

9

Concert B



Musical notation for Concert B scale, bass clef, key signature of three sharps (F#, C#, G#), and a common time signature. The scale consists of eighth notes with slurs, starting on G2 and ending on G3.

10

Concert E



Musical notation for Concert E scale, bass clef, key signature of three sharps (F#, C#, G#), and a common time signature. The scale consists of eighth notes with slurs, starting on G2 and ending on G3.

11

Concert A



Musical notation for Concert A scale, bass clef, key signature of three sharps (F#, C#, G#), and a common time signature. The scale consists of eighth notes with slurs, starting on G2 and ending on G3.

12

Concert D



Musical notation for Concert D scale, bass clef, key signature of three sharps (F#, C#, G#), and a common time signature. The scale consists of eighth notes with slurs, starting on G2 and ending on G3.

Clarinet in B $\flat$

# Jazz Band Blues Scales

M. R. Jingles

## Pass-Offs

1  $\text{♩} = 92$  Concert G



2 Concert C



3 Concert F



4 Concert B $\flat$



5 Concert E $\flat$



6 Concert A $\flat$



7 Concert D $\flat$



8 Concert G $\flat$







# Jazz Band Blues Scales

## Pass-Offs

1 ♩ = 92 Concert G



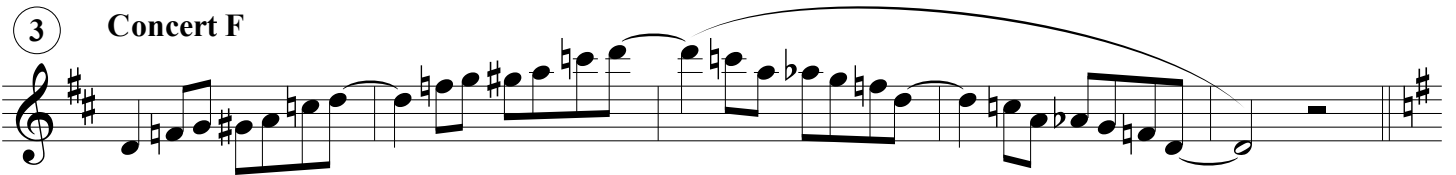
Musical notation for Concert G scale in 4/4 time, featuring a series of eighth notes with slurs and ties.

2 Concert C



Musical notation for Concert C scale in 4/4 time, featuring a series of eighth notes with slurs and ties.

3 Concert F



Musical notation for Concert F scale in 4/4 time, featuring a series of eighth notes with slurs and ties.

4 Concert Bb



Musical notation for Concert Bb scale in 4/4 time, featuring a series of eighth notes with slurs and ties.

5 Concert Eb



Musical notation for Concert Eb scale in 4/4 time, featuring a series of eighth notes with slurs and ties.

6 Concert Ab



Musical notation for Concert Ab scale in 4/4 time, featuring a series of eighth notes with slurs and ties.

7 Concert Db



Musical notation for Concert Db scale in 4/4 time, featuring a series of eighth notes with slurs and ties.

8 Concert Gb



Musical notation for Concert Gb scale in 4/4 time, featuring a series of eighth notes with slurs and ties.

9

Concert B

Musical notation for Concert B scale, starting on G4 and ending on G4. The scale consists of the notes G, A, Bb, C, D, Eb, F, G. It is written in treble clef with a key signature of two flats (Bb and Eb) and a common time signature. The notes are grouped into pairs with slurs, and there are fermatas over the final G notes.

10

Concert E

Musical notation for Concert E scale, starting on G4 and ending on G4. The scale consists of the notes G, A, Bb, C, D, Eb, F, G. It is written in treble clef with a key signature of two flats (Bb and Eb) and a common time signature. The notes are grouped into pairs with slurs, and there are fermatas over the final G notes.

11

Concert A

Musical notation for Concert A scale, starting on G4 and ending on G4. The scale consists of the notes G, A, B, C, D, E, F#, G. It is written in treble clef with a key signature of three sharps (F#, C#, G#) and a common time signature. The notes are grouped into pairs with slurs, and there are fermatas over the final G notes.

12

Concert D

Musical notation for Concert D scale, starting on G4 and ending on G4. The scale consists of the notes G, A, B, C, D, E, F#, G. It is written in treble clef with a key signature of three sharps (F#, C#, G#) and a common time signature. The notes are grouped into pairs with slurs, and there are fermatas over the final G notes.

Tenor Sax

# Jazz Band Blues Scales

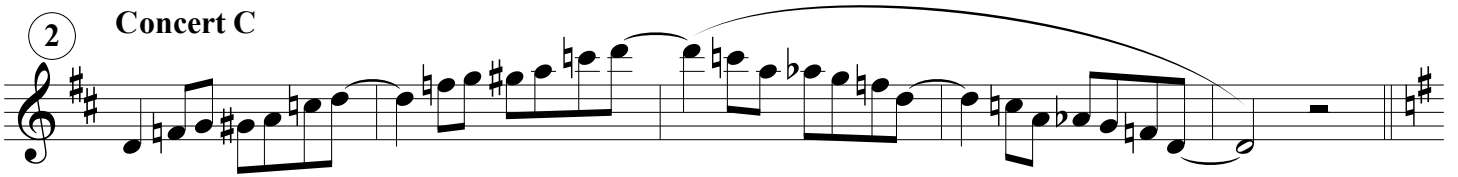
M. R. Jingles

## Pass-Offs

1 ♩ = 92 **Concert G**



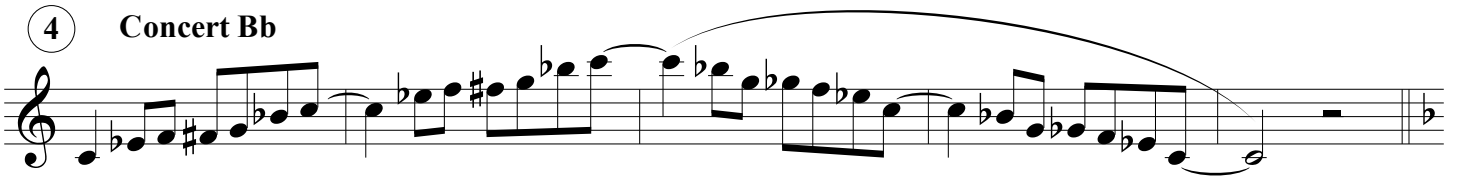
2 **Concert C**



3 **Concert F**



4 **Concert Bb**



5 **Concert Eb**



6 **Concert Ab**



7 **Concert Db**



8 **Concert Gb**



9

Concert B



Musical notation for Concert B scale in B-flat major. The scale is written on a single staff with a treble clef. It consists of two measures of eighth notes: the first measure contains B-flat, C, D, E-flat, F, G, A-flat, B-flat; the second measure contains C, D, E, F, G, A, B, C. The notes are grouped into pairs with slurs. The piece concludes with a key signature change to E-flat major, indicated by two flats, and a final chord of E-flat major.

10

Concert E



Musical notation for Concert E scale in E major. The scale is written on a single staff with a treble clef. It consists of two measures of eighth notes: the first measure contains E, F#, G#, A, B, C#, D; the second measure contains E, F#, G#, A, B, C#, D. The notes are grouped into pairs with slurs. The piece concludes with a key signature change to A major, indicated by one sharp, and a final chord of A major.

11

Concert A



Musical notation for Concert A scale in A major. The scale is written on a single staff with a treble clef. It consists of two measures of eighth notes: the first measure contains A, B, C, D, E, F#, G; the second measure contains A, B, C, D, E, F#, G. The notes are grouped into pairs with slurs. The piece concludes with a key signature change to D major, indicated by two sharps, and a final chord of D major.

12

Concert D



Musical notation for Concert D scale in D major. The scale is written on a single staff with a treble clef. It consists of two measures of eighth notes: the first measure contains D, E, F#, G, A, B, C; the second measure contains D, E, F#, G, A, B, C. The notes are grouped into pairs with slurs. The piece concludes with a key signature change to G major, indicated by one sharp, and a final chord of G major.

# Jazz Band Blues Scales

## Pass-Offs

① ♩ = 92 Concert G



Musical notation for Concert G scale in 4/4 time, starting on G4. The scale consists of 12 notes: G, A, B, C, D, E, F, G, A, B, C, D. The notes are written on a treble clef staff with a key signature of three sharps (F#, C#, G#).

② Concert C



Musical notation for Concert C scale in 4/4 time, starting on C4. The scale consists of 12 notes: C, D, E, F, G, A, B, C, D, E, F, G. The notes are written on a treble clef staff with a key signature of two sharps (F#, C#).

③ Concert F



Musical notation for Concert F scale in 4/4 time, starting on F3. The scale consists of 12 notes: F, G, A, B, C, D, E, F, G, A, B, C. The notes are written on a treble clef staff with a key signature of one sharp (F#).

④ Concert Bb



Musical notation for Concert Bb scale in 4/4 time, starting on Bb3. The scale consists of 12 notes: Bb, C, D, Eb, F, G, Ab, Bb, C, D, Eb, F. The notes are written on a treble clef staff with a key signature of one sharp (F#).

⑤ Concert Eb



Musical notation for Concert Eb scale in 4/4 time, starting on Eb3. The scale consists of 12 notes: Eb, F, G, Ab, Bb, C, Db, Eb, F, G, Ab, Bb. The notes are written on a treble clef staff with a key signature of one sharp (F#).

⑥ Concert Ab



Musical notation for Concert Ab scale in 4/4 time, starting on Ab3. The scale consists of 12 notes: Ab, Bb, C, Db, Eb, F, G, Ab, Bb, C, Db, Eb. The notes are written on a treble clef staff with a key signature of one sharp (F#).

⑦ Concert Db



Musical notation for Concert Db scale in 4/4 time, starting on Db3. The scale consists of 12 notes: Db, Eb, F, G, Ab, Bb, C, Db, Eb, F, G, Ab. The notes are written on a treble clef staff with a key signature of one sharp (F#).

⑧ Concert Gb



Musical notation for Concert Gb scale in 4/4 time, starting on Gb3. The scale consists of 12 notes: Gb, Ab, Bb, C, Db, Eb, F, Gb, Ab, Bb, C, Db. The notes are written on a treble clef staff with a key signature of one sharp (F#).

9

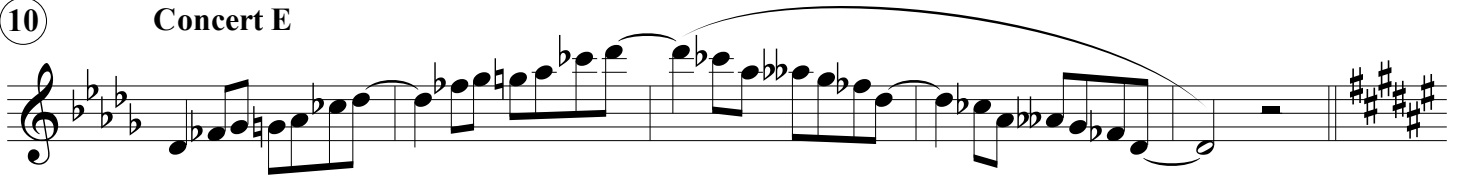
Concert B



Musical notation for Concert B scale. The scale is written on a single staff in treble clef. The key signature has two flats (B-flat and E-flat). The scale consists of the following notes: B-flat, C, D, E-flat, F, G, A, B-flat, C, D, E-flat, F, G, A, B-flat, C. The notes are grouped into four measures of four notes each, with slurs over each group. The final note is a whole note.

10

Concert E



Musical notation for Concert E scale. The scale is written on a single staff in treble clef. The key signature has three flats (B-flat, E-flat, and A-flat). The scale consists of the following notes: B-flat, C, D, E-flat, F, G, A-flat, B-flat, C, D, E-flat, F, G, A-flat, B-flat, C. The notes are grouped into four measures of four notes each, with slurs over each group. The final note is a whole note.

11

Concert A



Musical notation for Concert A scale. The scale is written on a single staff in treble clef. The key signature has four sharps (F-sharp, C-sharp, G-sharp, and D-sharp). The scale consists of the following notes: F-sharp, G, A, B, C, D, E, F-sharp, G, A, B, C, D, E, F-sharp, G. The notes are grouped into four measures of four notes each, with slurs over each group. The final note is a whole note.

12

Concert D



Musical notation for Concert D scale. The scale is written on a single staff in treble clef. The key signature has two sharps (F-sharp and C-sharp). The scale consists of the following notes: F-sharp, G, A, B, C, D, E, F-sharp, G, A, B, C, D, E, F-sharp, G. The notes are grouped into four measures of four notes each, with slurs over each group. The final note is a whole note.

Trumpet in B $\flat$

# Jazz Band Blues Scales

M. R. Jingles

## Pass-Offs

1  $\text{♩} = 92$  Concert G



2 Concert C



3 Concert F



4 Concert B $\flat$



5 Concert E $\flat$



6 Concert A $\flat$



7 Concert D $\flat$



8 Concert G $\flat$



9

Concert B

Musical notation for Concert B scale. The scale is written on a single staff in treble clef. The key signature has two flats (B-flat and E-flat), indicating the key of B-flat major. The scale consists of 11 notes: B-flat, C, D, E-flat, F, G, A, B-flat, C, D, E-flat. The notes are grouped into four measures of three notes each, with a final measure containing two notes. The scale is marked with a slur and a fermata at the end.

10

Concert E

Musical notation for Concert E scale. The scale is written on a single staff in treble clef. The key signature has three sharps (F#, C#, G#), indicating the key of E major. The scale consists of 11 notes: E, F#, G, A, B, C#, D, E, F#, G, A. The notes are grouped into four measures of three notes each, with a final measure containing two notes. The scale is marked with a slur and a fermata at the end.

11

Concert A

Musical notation for Concert A scale. The scale is written on a single staff in treble clef. The key signature has three sharps (F#, C#, G#), indicating the key of E major. The scale consists of 11 notes: E, F#, G, A, B, C#, D, E, F#, G, A. The notes are grouped into four measures of three notes each, with a final measure containing two notes. The scale is marked with a slur and a fermata at the end.

12

Concert D

Musical notation for Concert D scale. The scale is written on a single staff in treble clef. The key signature has three sharps (F#, C#, G#), indicating the key of E major. The scale consists of 11 notes: E, F#, G, A, B, C#, D, E, F#, G, A. The notes are grouped into four measures of three notes each, with a final measure containing two notes. The scale is marked with a slur and a fermata at the end.



# Jazz Band Blues Scales

## Pass-Offs

1 = 92 Concert G

Musical notation for Concert G scale pass-off, featuring a treble clef, key signature of one sharp (F#), and 4/4 time signature. The scale is written as a continuous line of eighth notes with slurs and ties, ending with a whole note G.

2 Concert C

Musical notation for Concert C scale pass-off, featuring a treble clef, key signature of one sharp (F#), and 4/4 time signature. The scale is written as a continuous line of eighth notes with slurs and ties, ending with a whole note C.

3 Concert F

Musical notation for Concert F scale pass-off, featuring a treble clef, key signature of one sharp (F#), and 4/4 time signature. The scale is written as a continuous line of eighth notes with slurs and ties, ending with a whole note F.

4 Concert Bb

Musical notation for Concert Bb scale pass-off, featuring a treble clef, key signature of two flats (Bb), and 4/4 time signature. The scale is written as a continuous line of eighth notes with slurs and ties, ending with a whole note Bb.

5 Concert Eb

Musical notation for Concert Eb scale pass-off, featuring a treble clef, key signature of three flats (Eb), and 4/4 time signature. The scale is written as a continuous line of eighth notes with slurs and ties, ending with a whole note Eb.

6 Concert Ab

Musical notation for Concert Ab scale pass-off, featuring a treble clef, key signature of three flats (Eb), and 4/4 time signature. The scale is written as a continuous line of eighth notes with slurs and ties, ending with a whole note Ab.

7 Concert Db

Musical notation for Concert Db scale pass-off, featuring a treble clef, key signature of four flats (Db), and 4/4 time signature. The scale is written as a continuous line of eighth notes with slurs and ties, ending with a whole note Db.

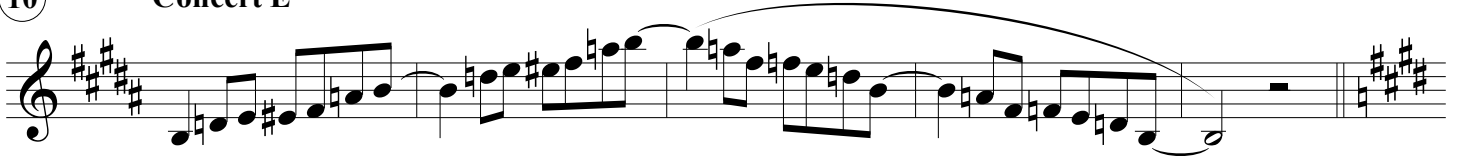
8 Concert Gb

Musical notation for Concert Gb scale pass-off, featuring a treble clef, key signature of four flats (Db), and 4/4 time signature. The scale is written as a continuous line of eighth notes with slurs and ties, ending with a whole note Gb.

9

**Concert B**

10

**Concert E**

11

**Concert A**

12

**Concert D**

Trombone

# Jazz Band Blues Scales

M. R. Jingles

## Pass-Offs

♩ = 92

Concert G

First musical staff showing the Concert G scale in bass clef, 4/4 time. The scale starts on G4 and ends on G4. It consists of 12 notes: G, A, B, C, D, E, F, G, A, B, C, D. The notes are grouped into four pairs, each with a slur above it. The key signature has one sharp (F#).

2 Concert C

Second musical staff showing the Concert C scale in bass clef, 4/4 time. The scale starts on C4 and ends on C4. It consists of 12 notes: C, D, E, F, G, A, B, C, D, E, F, G. The notes are grouped into four pairs, each with a slur above it. The key signature has no sharps or flats.

3 Concert F

Third musical staff showing the Concert F scale in bass clef, 4/4 time. The scale starts on F3 and ends on F3. It consists of 12 notes: F, G, A, B, C, D, E, F, G, A, B, C. The notes are grouped into four pairs, each with a slur above it. The key signature has one flat (Bb).

4 Concert Bb

Fourth musical staff showing the Concert Bb scale in bass clef, 4/4 time. The scale starts on Bb3 and ends on Bb3. It consists of 12 notes: Bb, C, D, Eb, F, G, Ab, Bb, C, D, Eb, F. The notes are grouped into four pairs, each with a slur above it. The key signature has two flats (Bb, Eb).

5 Concert Eb

Fifth musical staff showing the Concert Eb scale in bass clef, 4/4 time. The scale starts on Eb3 and ends on Eb3. It consists of 12 notes: Eb, F, G, Ab, Bb, C, Db, Eb, F, G, Ab, Bb. The notes are grouped into four pairs, each with a slur above it. The key signature has three flats (Bb, Eb, Ab).

6 Concert Ab

Sixth musical staff showing the Concert Ab scale in bass clef, 4/4 time. The scale starts on Ab3 and ends on Ab3. It consists of 12 notes: Ab, Bb, C, Db, Eb, F, G, Ab, Bb, C, Db, Eb. The notes are grouped into four pairs, each with a slur above it. The key signature has four flats (Bb, Eb, Ab, Db).

7 Concert Db

Seventh musical staff showing the Concert Db scale in bass clef, 4/4 time. The scale starts on Db3 and ends on Db3. It consists of 12 notes: Db, Eb, F, G, Ab, Bb, C, Db, Eb, F, G, Ab. The notes are grouped into four pairs, each with a slur above it. The key signature has five flats (Bb, Eb, Ab, Db, Gb).

8 Concert Gb

Eighth musical staff showing the Concert Gb scale in bass clef, 4/4 time. The scale starts on Gb3 and ends on Gb3. It consists of 12 notes: Gb, Ab, Bb, C, Db, Eb, F, Gb, Ab, Bb, C, Db. The notes are grouped into four pairs, each with a slur above it. The key signature has six flats (Bb, Eb, Ab, Db, Gb, Cb).

9

Concert B



Musical notation for Concert B scale, bass clef, key signature of three sharps (F#, C#, G#), starting on G2. The scale consists of 12 notes: G2, A2, B2, C3, D3, E3, F#3, G#3, A#3, B#3, C4, D4. The notation includes slurs and ties to indicate the sequence of notes.

10

Concert E



Musical notation for Concert E scale, bass clef, key signature of three sharps (F#, C#, G#), starting on E2. The scale consists of 12 notes: E2, F#2, G#2, A#2, B#2, C#3, D#3, E#3, F#3, G#3, A#3, B#3. The notation includes slurs and ties to indicate the sequence of notes.

11

Concert A



Musical notation for Concert A scale, bass clef, key signature of two sharps (F#, C#), starting on A2. The scale consists of 12 notes: A2, B2, C#3, D#3, E#3, F#3, G#3, A#3, B#3, C#4, D#4, E#4. The notation includes slurs and ties to indicate the sequence of notes.

12

Concert D



Musical notation for Concert D scale, bass clef, key signature of two sharps (F#, C#), starting on D2. The scale consists of 12 notes: D2, E2, F#2, G#2, A#2, B#2, C#3, D#3, E#3, F#3, G#3, A#3. The notation includes slurs and ties to indicate the sequence of notes.

# Jazz Band Blues Scales

## Pass-Offs

♩ = 92

Concert G

Musical notation for Concert G scale in bass clef, 4/4 time. The scale starts on G4 and ends on G4. It consists of 12 notes: G, A, B, C, D, E, F, G, A, B, C, D. The notes are grouped into four pairs, each with a slur above it. The first pair (G, A) is a half note, the second (B, C) is a quarter note, the third (D, E) is a quarter note, and the fourth (F, G) is a half note. The final G is a half note.

2 Concert C

Musical notation for Concert C scale in bass clef, 4/4 time. The scale starts on C4 and ends on C4. It consists of 12 notes: C, D, E, F, G, A, B, C, D, E, F, G. The notes are grouped into four pairs, each with a slur above it. The first pair (C, D) is a half note, the second (E, F) is a quarter note, the third (G, A) is a quarter note, and the fourth (B, C) is a half note. The final C is a half note.

3 Concert F

Musical notation for Concert F scale in bass clef, 4/4 time. The scale starts on F3 and ends on F3. It consists of 12 notes: F, G, A, B, C, D, E, F, G, A, B, C. The notes are grouped into four pairs, each with a slur above it. The first pair (F, G) is a half note, the second (A, B) is a quarter note, the third (C, D) is a quarter note, and the fourth (E, F) is a half note. The final F is a half note.

4 Concert Bb

Musical notation for Concert Bb scale in bass clef, 4/4 time. The scale starts on Bb3 and ends on Bb3. It consists of 12 notes: Bb, C, D, Eb, F, G, Ab, Bb, C, D, Eb, F. The notes are grouped into four pairs, each with a slur above it. The first pair (Bb, C) is a half note, the second (D, Eb) is a quarter note, the third (F, G) is a quarter note, and the fourth (Ab, Bb) is a half note. The final Bb is a half note.

5 Concert Eb

Musical notation for Concert Eb scale in bass clef, 4/4 time. The scale starts on Eb3 and ends on Eb3. It consists of 12 notes: Eb, F, G, Ab, Bb, C, D, Eb, F, G, Ab, Bb. The notes are grouped into four pairs, each with a slur above it. The first pair (Eb, F) is a half note, the second (G, Ab) is a quarter note, the third (Bb, C) is a quarter note, and the fourth (D, Eb) is a half note. The final Eb is a half note.

6 Concert Ab

Musical notation for Concert Ab scale in bass clef, 4/4 time. The scale starts on Ab3 and ends on Ab3. It consists of 12 notes: Ab, Bb, C, D, Eb, F, G, Ab, Bb, C, D, Eb. The notes are grouped into four pairs, each with a slur above it. The first pair (Ab, Bb) is a half note, the second (C, D) is a quarter note, the third (Eb, F) is a quarter note, and the fourth (G, Ab) is a half note. The final Ab is a half note.

7 Concert Db

Musical notation for Concert Db scale in bass clef, 4/4 time. The scale starts on Db3 and ends on Db3. It consists of 12 notes: Db, Eb, F, G, Ab, Bb, C, Db, Eb, F, G, Ab. The notes are grouped into four pairs, each with a slur above it. The first pair (Db, Eb) is a half note, the second (F, G) is a quarter note, the third (Ab, Bb) is a quarter note, and the fourth (C, Db) is a half note. The final Db is a half note.

8 Concert Gb

Musical notation for Concert Gb scale in bass clef, 4/4 time. The scale starts on Gb3 and ends on Gb3. It consists of 12 notes: Gb, Ab, Bb, C, D, Eb, F, Gb, Ab, Bb, C, D. The notes are grouped into four pairs, each with a slur above it. The first pair (Gb, Ab) is a half note, the second (Bb, C) is a quarter note, the third (D, Eb) is a quarter note, and the fourth (F, Gb) is a half note. The final Gb is a half note.

9

Concert B



10

Concert E



11

Concert A



12

Concert D



Tuba

# Jazz Band Blues Scales

M. R. Jingles

## Pass-Offs

♩ = 92

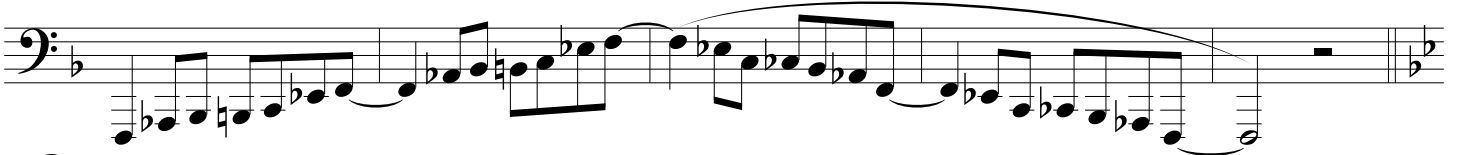
Concert G



② Concert C



③ Concert F



④ Concert Bb



⑤ Concert Eb



⑥ Concert Ab



⑦ Concert Db



⑧ Concert Gb



9

Concert B



Musical notation for Concert B scale in bass clef, key of D major. The scale consists of 12 notes: D, E, F#, G, A, B, C, D, E, F#, G, A, B. The notes are grouped into four measures of three notes each, with slurs under each group. The final note is a whole note.

10

Concert E



Musical notation for Concert E scale in bass clef, key of D major. The scale consists of 12 notes: D, E, F#, G, A, B, C, D, E, F#, G, A, B. The notes are grouped into four measures of three notes each, with slurs under each group. The final note is a whole note.

11

Concert A



Musical notation for Concert A scale in bass clef, key of D major. The scale consists of 12 notes: D, E, F#, G, A, B, C, D, E, F#, G, A, B. The notes are grouped into four measures of three notes each, with slurs under each group. The final note is a whole note.

12

Concert D



Musical notation for Concert D scale in bass clef, key of D major. The scale consists of 12 notes: D, E, F#, G, A, B, C, D, E, F#, G, A, B. The notes are grouped into four measures of three notes each, with slurs under each group. The final note is a whole note.



Mallets

# Jazz Band Blues Scales

M. R. Jingles

## Pass-Offs

1 = 92

Concert G

Musical notation for Concert G scale in 4/4 time, starting on G4. The scale is written in treble clef with a key signature of one sharp (F#). It consists of 12 notes: G, A, B, C, D, E, F#, G, A, B, C, D. The notes are beamed in groups of four, with a slur over the entire scale. The piece ends with a whole note G.

2

Concert C

Musical notation for Concert C scale in 4/4 time, starting on C4. The scale is written in treble clef with a key signature of one flat (F). It consists of 12 notes: C, D, E, F, G, A, B, C, D, E, F, G. The notes are beamed in groups of four, with a slur over the entire scale. The piece ends with a whole note C.

3

Concert F

Musical notation for Concert F scale in 4/4 time, starting on F3. The scale is written in treble clef with a key signature of two flats (Bb, Eb). It consists of 12 notes: F, G, Ab, Bb, C, D, Eb, F, G, Ab, Bb, C. The notes are beamed in groups of four, with a slur over the entire scale. The piece ends with a whole note F.

4

Concert Bb

Musical notation for Concert Bb scale in 4/4 time, starting on Bb3. The scale is written in treble clef with a key signature of two flats (Bb, Eb). It consists of 12 notes: Bb, C, D, Eb, F, G, Ab, Bb, C, D, Eb, F. The notes are beamed in groups of four, with a slur over the entire scale. The piece ends with a whole note Bb.

5

Concert Eb

Musical notation for Concert Eb scale in 4/4 time, starting on Eb3. The scale is written in treble clef with a key signature of three flats (Bb, Eb, Ab). It consists of 12 notes: Eb, F, G, Ab, Bb, C, Db, Eb, F, G, Ab, Bb. The notes are beamed in groups of four, with a slur over the entire scale. The piece ends with a whole note Eb.

6

Concert Ab

Musical notation for Concert Ab scale in 4/4 time, starting on Ab3. The scale is written in treble clef with a key signature of three flats (Bb, Eb, Ab). It consists of 12 notes: Ab, Bb, C, Db, Eb, F, G, Ab, Bb, C, Db, Eb. The notes are beamed in groups of four, with a slur over the entire scale. The piece ends with a whole note Ab.

7

Concert Db

Musical notation for Concert Db scale in 4/4 time, starting on Db3. The scale is written in treble clef with a key signature of four flats (Bb, Eb, Ab, Db). It consists of 12 notes: Db, Eb, F, G, Ab, Bb, C, Db, Eb, F, G, Ab. The notes are beamed in groups of four, with a slur over the entire scale. The piece ends with a whole note Db.

8

Concert Gb

Musical notation for Concert Gb scale in 4/4 time, starting on Gb3. The scale is written in treble clef with a key signature of four flats (Bb, Eb, Ab, Db). It consists of 12 notes: Gb, Ab, Bb, C, Db, Eb, F, Gb, Ab, Bb, C, Db. The notes are beamed in groups of four, with a slur over the entire scale. The piece ends with a whole note Gb.

9

**Concert B**



10

**Concert E**



11

**Concert A**



12

**Concert D**

